


Manages **\$500 billion** in public assets



\$43 billion per year in operational expenditure



Collects **9.7 mega tonnes** of kerbside waste every year




Manages **678,000 km** of roads



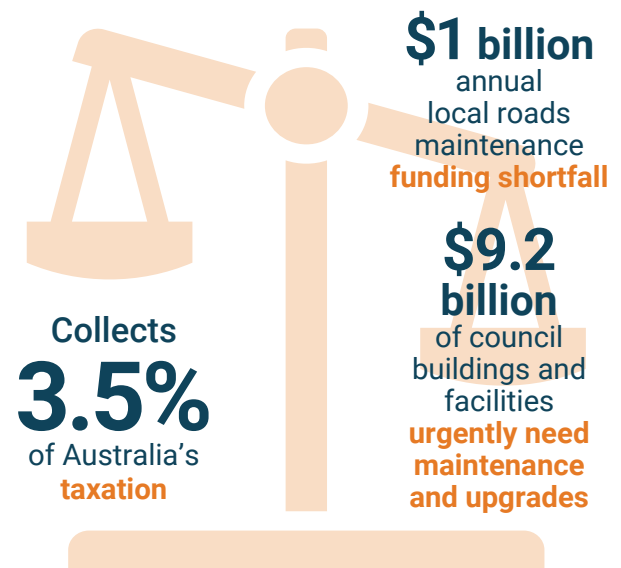
Employs **190,800** Australians



5670 elected councillors



9 in 10 councils experiencing jobs and skills shortages

80% of councils have or are developing emissions reduction targets



More than **60%** of councils impacted by natural disasters in 2022 and 2023

